



XXV User Meeting 2019

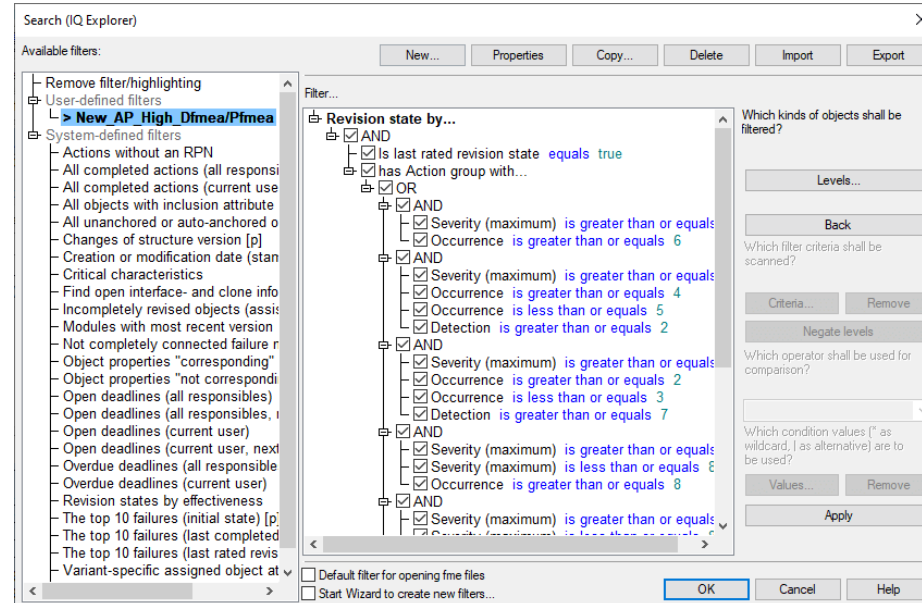
APIS
Informationstechnologien GmbH

Tips and tricks by the APIS support team

AP rating in IQ version 6.5

The action priority (AP) is fully integrated into version 7.0 of the IQ-Software. In Version 6.5, the AP rating can be determined via predefined filters.

Download at: <https://www.apis.de/sl/ap/>. After extracting the zip file, you will find three fsf files. Open them via the “Import” button in the filter dialog of the IQ Explorer:



AP rating in IQ version 6.5 (2)

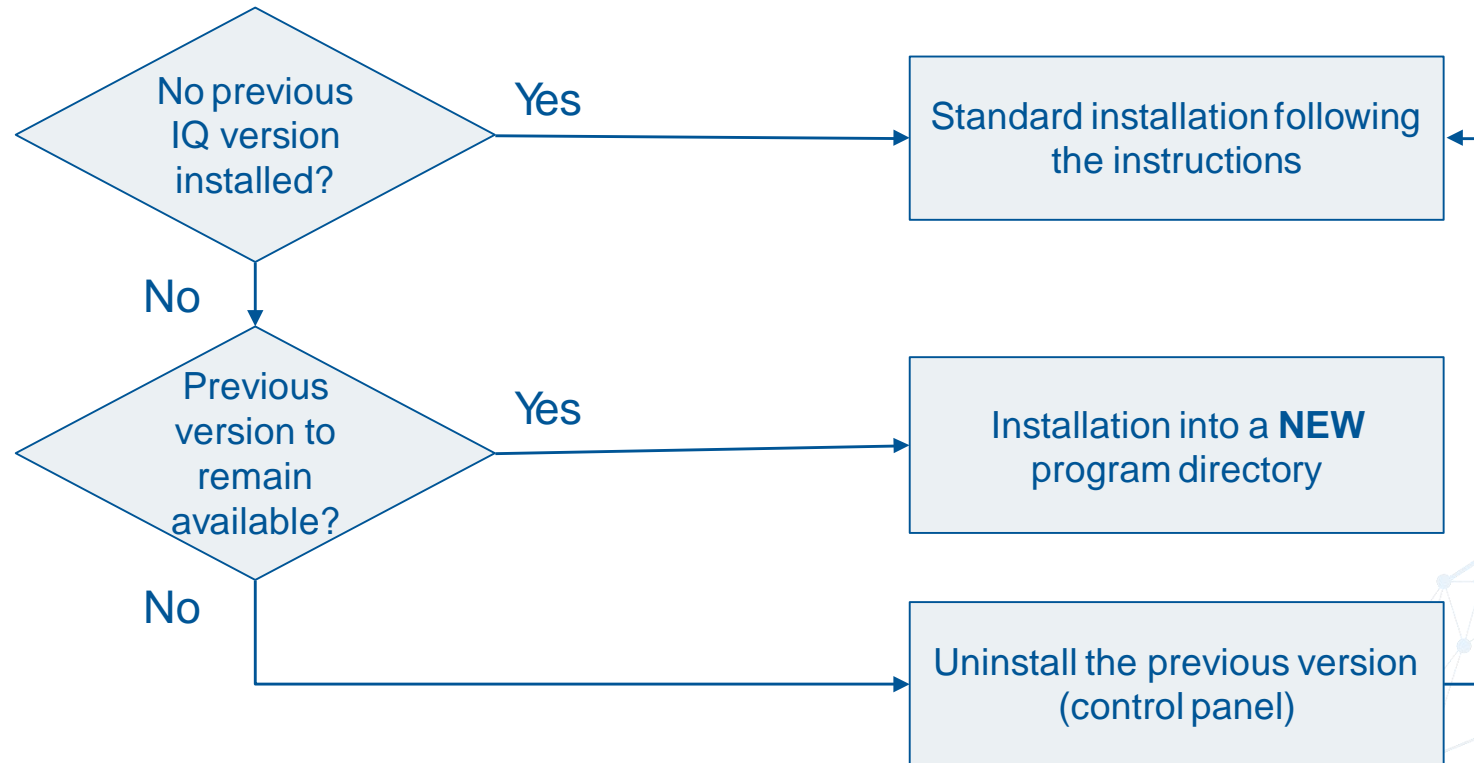
Recommended workflow:

- Apply the AP filter in the IQ Explorer
- Select the entire list of results (CTRL + A)
- Click right mouse button -> Properties
- Set a corresponding user-defined attribute

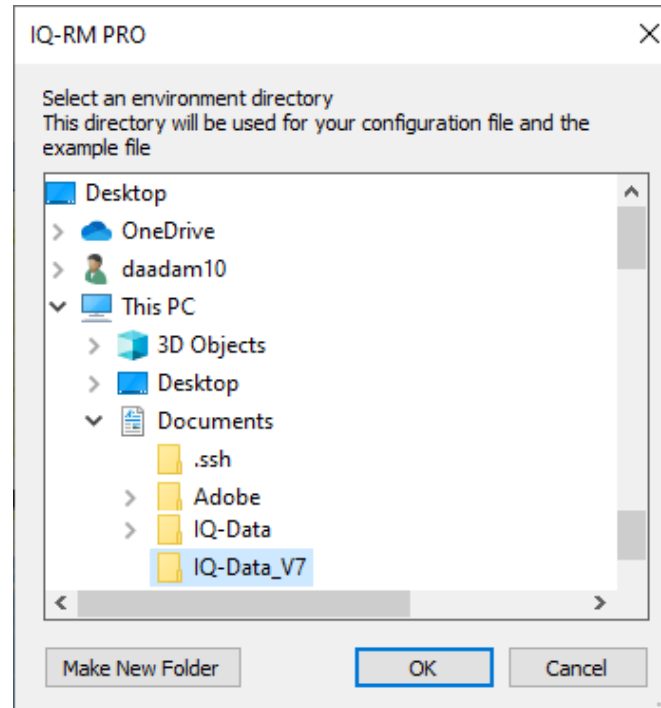
Afterwards, you can view the data in any editor (e.g. FMEA form) using an auto-filter for the user-defined attribute.

Installation of version 7.0

Find out before you install the software:



Initial program start – administrative directory

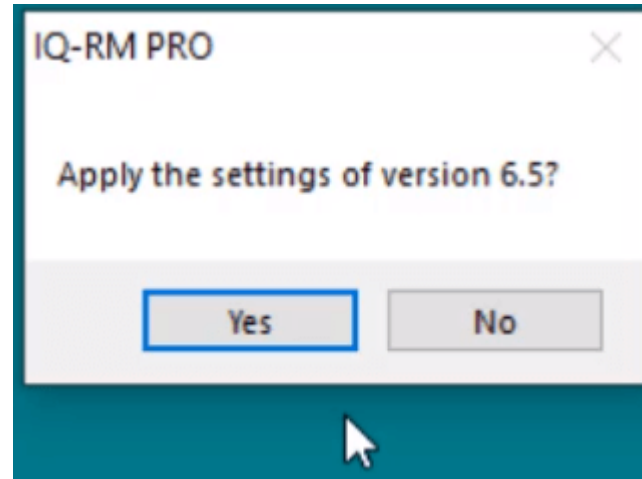


The installation program usually suggests the “IQ-Data” folder.

Recommended:

Create a **separate folder**, if another version of IQ is already installed!

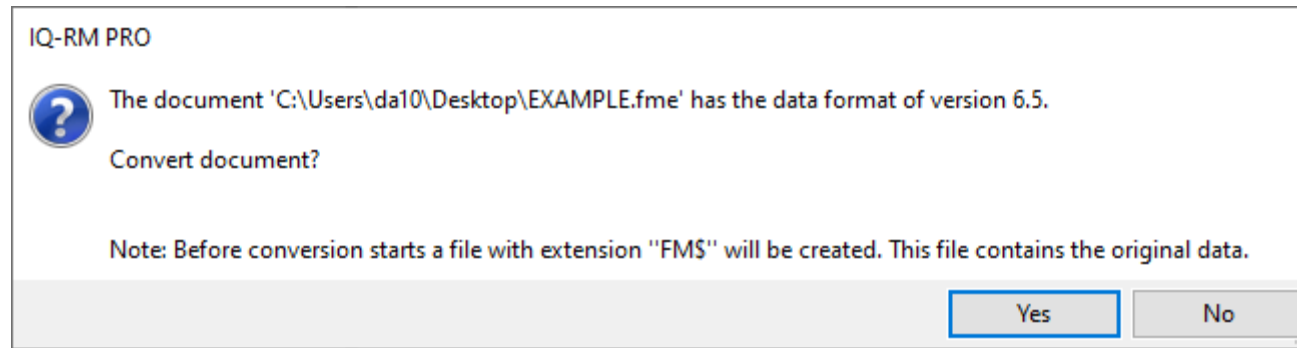
Initial program start – apply settings?



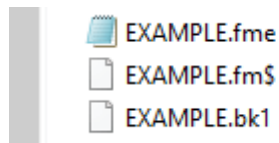
If you are updating your IQ-Version, it is possible to keep all of your current settings (including the template file) when you update. This is true of all cases, except when you have added newly available objects e.g. AP catalogs to Version 6.5. These settings will be overwritten should you click "Yes". It is therefore recommended to click "No" if you want to keep them.

The file extension “fm\$”

When you open an fme file from a previous version (i.e. file saved in Version 6.5 and opened in Version 7.0), the file must be converted. You cannot open the converted file anymore in the previous version.



The old format of the file will be saved with the extension “fm\$”, which can still be opened in the previous version:



14/10/2019 14:45	FME File	2,959 KB
14/10/2019 14:44	FMS File	1,500 KB
14/10/2019 14:45	BK1 File	2,953 KB

Unanchored objects

The concept of unanchored objects (in the structure) has been abandoned for Version 7.0. Converting a fme file from 6.5 to 7.0 leaves unanchored objects added to the element "Converted unanchored elements".

The screenshot displays the SAP Personal Information Manager (PIM) interface for a file named "AZ-4711 Assy.fme". The interface is divided into several sections:

- Top Panel:** Shows the file path and the structure name "AZ-4711 Assy". A message states: "Unanchored elements are not supported for **Version 7.0** of the **IQ-Software** onwards. Previously unanchored elements are now anchored to *"Converted unanchored elements"*."
- Left Panel (Navigation):** Shows a tree view under "Conversion messages" for the date "15/10/2019". It lists "System elements" and a sub-entry "1.4 Converted unanchored elements {1}" which is highlighted in yellow.
- Bottom Panel (Structure Editor):** Shows the structure "AZ-4711 Assy [Process]". The structure tree includes "receipt of goods", "frame assembly", "....", and "Converted unanchored elements" (highlighted in yellow). A detailed view of "Converted unanchored elements {1}" shows sub-elements: "Converted unanchored elements {1}" and "wrong screws used {1}" (with a lightning bolt icon).

AIAG/VDA form: Stacked view

The command “**Open stacked view**” is available in the context menu of the new AIAG/VDA Form Editor for those who prefer the older VDA-layout style.

The screenshot displays the AIAG/VDA Form Editor interface. The main window shows a form titled "PLANNING and PREPARATION (STEP 1)" with fields for Company Name, Engineering Location, Customer Name, and Model Year(s)/Platform(s). Below these fields is a table with columns for hierarchical levels and functions. A context menu is open over the table, listing various options such as "Highlight", "Convert to", "Structure Tree", "Function Net", "FMEA Forms Editor", "DRBFM Forms Editor", "Control Plan", "Process Flow Diagram", "Graph Editor (butterfly partial view)", "Risk matrix", "AP Catalog", "FMEA cover sheet", "Display options...", "Bookmark", "Set mark", "Back", and "Open stacked view". The "Open stacked view" option is highlighted in blue, indicating it is the selected command.

1. Next Higher Level	2. Focus Element	3. Next Lower Level or Characteristic Type	1. Next Higher Level Function and Requirement	2. Focus Element Function and Requirement	3. Next Lower Level Function and Requirement or Characteristic
N/A	2 Cruise Control SC 2042 {2}	2.1 Signal cable (complete) {2}	Function	2.e comply with customers assembly requirements {2}	2.1.f ease of exchange {1}

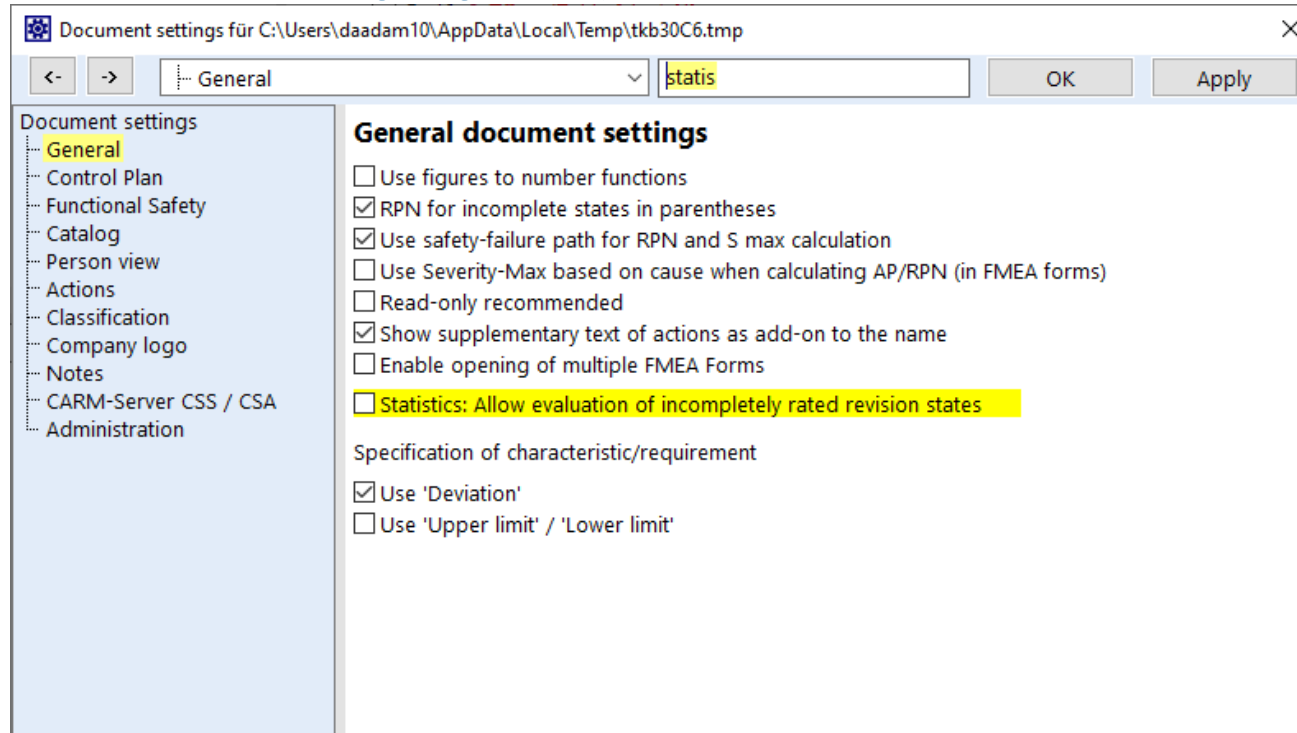
Context Menu Options:

- Highlight
- Convert to
- > Structure Tree
- > Function Net
- > FMEA Forms Editor
- > DRBFM Forms Editor
- > Control Plan
- > Process Flow Diagram
- > Graph Editor (butterfly partial view)
- > Risk matrix
- > AP Catalog
- > FMEA cover sheet
- Display options...
- Bookmark
- Set mark (Shift+Ctrl+Up)
- Back (Shift+Ctrl+Left)
- Open stacked view**

Footer: C:\Users\daadam10\Documents\EXAMPLE.fme | Supervisor | 55: Read/write | 100% | >English

Search box in Document settings/Workstation settings

To locate items in your settings (Document and Workstation) quicker, use the search box. All matches are highlighted yellow:



You have got problems?

We can solve them!

support@apis.de